


WWW.UPPERDECKWEAR.COM



Upperdeck®

A graphic element consisting of a grid of small squares in red, blue, and grey, arranged in a pattern that tapers to the right.

Les photographies, descriptions et couleurs sont données à titre indicatif uniquement, et ne représentent en aucun cas un engagement contractuel. Le fabricant se réserve le droit d'apporter des modifications sans en aviser le client. Les couleurs telles qu'elles apparaissent sur le papier peuvent différer des couleurs réelles. Afin d'avoir une représentation réelle des couleurs, vous pouvez vous référer à nos cartes de coloris.

Nos remerciements tout particuliers au BRYC (Brussels Royal Yacht Club) d'avoir autorisé les prises de vues.

The photographs, descriptions and colours are of a purely indicative value and do not represent a contractual commitment. The manufacturer reserves the right to make modifications, which are binding, without informing customers. Colours on paper could be different to the actual colour. Do refer to our colour swatch cards for actual colour representation.

A special thanks to the BRYC (the Brussels Royal Yacht Club) for their permission to shoot the photographs.

100% Coton / Cotton

# COMANCHE



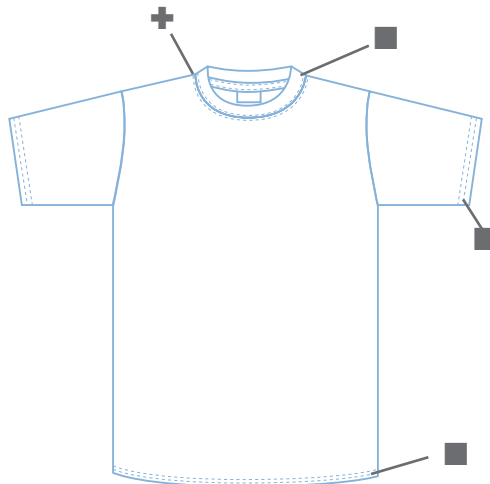
## Coloris / Colours:

-  blanc / white
-  ash
-  bleu marine / navy
-  bleu royal / king
-  bleu ciel / sky
-  vert / green
-  rust
-  orange
-  jaune / yellow
-  kaki
-  beige / sand
-  rouge / red
-  noir / black

## Tailles / Sizes

- |     |      |       |
|-----|------|-------|
| 4/6 | 8/10 | 12/14 |
| S   | M    | L     |
| XL  | XXL  | 3XL   |

## Dessin technique / Technical design:



- Double couture col, manches & bord inférieur / Double stitching on collar, sleeves & hem
- + Col 2cm coton - Lycra / Collar 2cm cotton with Lycra
-  +/- 130 g/m<sup>2</sup> Fil Ring Spun, Pré-rétréci / Ring spun yarn, Pre-shrunk

Colisage : par taille / par couleur  
Packaging: by size / by colour

- 10 Pcs / Polybag  
- 100 Pcs / Ctn

100% Coton / Cotton

## APACHE



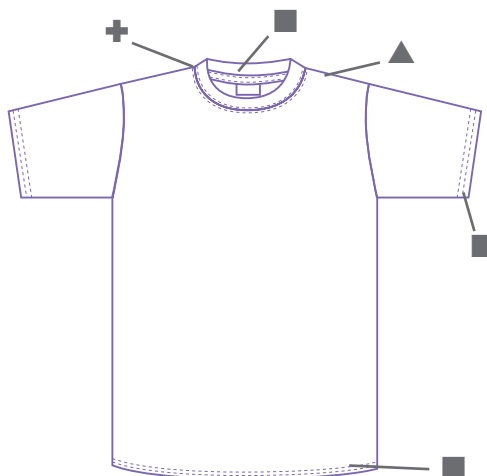
### Coloris / Colours:


-  blanc / white
-  ash
-  bleu marine / navy
-  bleu royal / king
-  bleu ciel / sky
-  vert / green
-  rust
-  orange
-  jaune / yellow
-  kaki
-  beige / sand
-  rouge / red
-  noir / black

### Tailles / Sizes

4/6	8/10	12/14
S	M	L
XL	XXL	3XL

### Dessin technique / Technical design:



- Double couture col, manches & bord inférieur / Double stitching on collar, sleeves & hem
- ⊕ Col 2cm coton - Lycra / Collar 2cm cotton with Lycra
- ▲ Renfort d'épaule à épaule / Shoulder to shoulder tape
-  +/- 150 g/m<sup>2</sup> Fil Ring Spun, Pré-rétréci / Ring spun yarn, Pre-shrunk

Colisage : par taille / par couleur  
Packaging: by size / by colour

- 10 Pcs / Polybag  
- 100 Pcs / Ctn



100% Coton / Cotton



# CHEROKEE



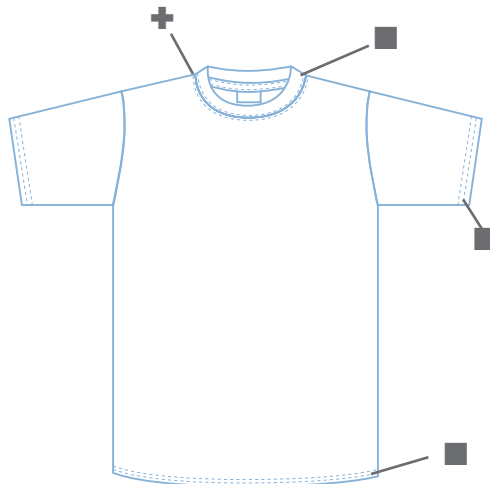
### Coloris / Colours:


-  blanc / white
-  ash
-  bleu marine / navy
-  bleu royal / king
-  vert / green
-  rust
-  orange
-  jaune / yellow
-  kaki
-  beige / sand
-  rouge / red
-  noir / black

### Tailles / Sizes

- |    |     |     |
|----|-----|-----|
| S  | M   | L   |
| XL | XXL | 3XL |

### Dessin technique / Technical design:



- Double couture col, manches & bord inférieur / Double stitching on collar, sleeves & hem
- + Col 2cm coton - Lycra / Collar 2cm cotton with Lycra
-  +/- 170 g/m<sup>2</sup> Fil Ring Spun, Pré-rétréci / Ring spun yarn, Pre-shrunk

Colisage : par taille / par couleur  
Packaging: by size / by colour

- 10 Pcs / Polybag  
- Pcs / Ctn

// T-Shirt / 3 //

WWW.UPPERDECKWEAR.COM

100% Coton / Cotton

# CHEYENNE

Manches Courtes - Manches Longues - Capuche  
Short Sleeves - Long Sleeves - Hood



## Coloris / Colours SS-LS:

-  blanc / white
-  ash
-  bleu marine / navy
-  bleu ciel / sky blue
-  bleu royal / king
-  vert / green
-  orange
-  jaune / yellow
-  kaki
-  beige / sand
-  rouge / red
-  noir / black

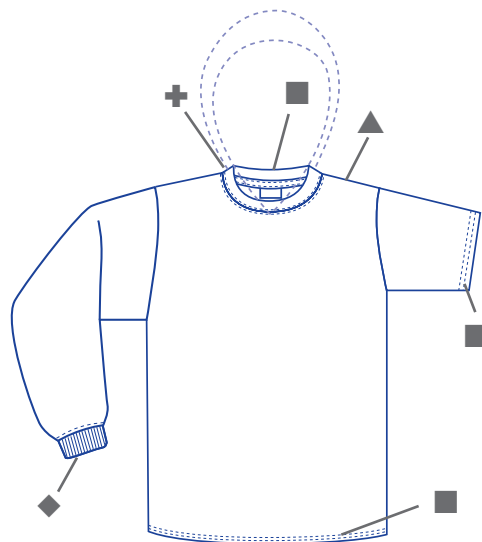
## Tailles / Sizes

- |    |     |     |
|----|-----|-----|
| S  | M   | L   |
| XL | XXL | 3XL |

## Coloris / Colours Hood

-  ash

## Dessin technique / Technical design:



- Double couture col, manches & bord inférieur / Double stitching on collar, sleeves & hem
- + Col 2cm coton - Lycra / Collar 2cm cotton with Lycra
- ▲ Renfort d'épaule à épaule / Shoulder to shoulder tape
- ◆ **LS + Hood:** Manches terminées par un bord côte / Ribbed cuffs
- ⦿ +/- 190 g/m<sup>2</sup> Fil Ring Spun, Pré-rétréci / Ring spun yarn, Pre-shrunk

Colisage : par taille / par couleur  
Packaging: by size / by colour

- 10 Pcs / Polybag  
- 50 Pcs / Ctn






100% Coton / Cotton



## SURFER



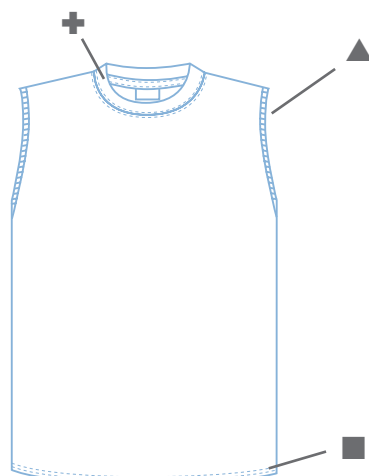
### Coloris / Colours:


-  blanc / white
-  bleu marine / navy
-  noir / black

### Tailles / Sizes

- |    |     |   |
|----|-----|---|
| S  | M   | L |
| XL | XXL |   |

### Dessin technique / Technical design:



- Coupe près du corps / Close fit
- ▲ Emmanchure côte 1x1 / Ribbed arm opening
- ⊕ Col 1cm coton - Lycra / Collar 1cm cotton with Lycra
-  +/- 170 g/m<sup>2</sup> Fil Ring Spun, Pré-rétréci / Ring spun yarn, Pre-shrunk

Colisage : par taille / par couleur  
Packaging: by size / by colour

- 10 Pcs / Polybag  
- 100 Pcs / Ctn

// T-Shirt / 5 //

100% Coton / Cotton

NORA CoV - Rond / Collar V - Round



Coloris / Colours:

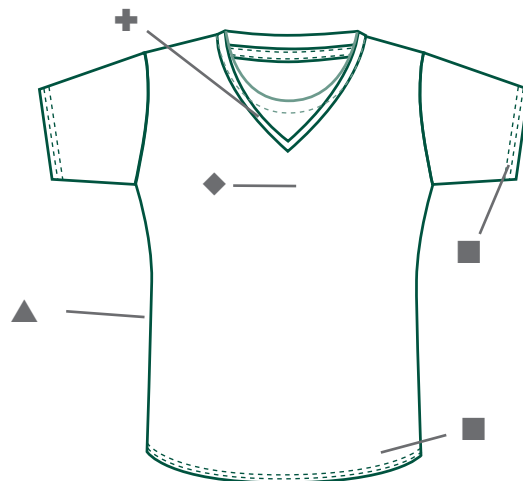
-  blanc / white
-  dark ash
-  bleu ciel / sky blue
-  marine / navy
-  rose / pink
-  rouge / red
-  beige / sand
-  kaki
-  noir / black


Tailles / Sizes

- S M



Dessin technique / Technical design:



- Double couture manches & bord inférieur / Double stitching on sleeves & hem
- +
- Colletage fin double épaisseur / Double collar tape with narrow stitching
- ▲ Coupe près du corps / Tapered body
- ◆ Côte 1x1 / Rib 1x1
-  +/- 220 g/m<sup>2</sup> Fil Ring Spun, Pré-rétréci / Ring spun yarn, Pre-shrunk

Colisage : par taille / par couleur  
Packaging: by size / by colour

- 10 Pcs / Polybag  
- 100 Pcs / Ctn



100% Coton / Cotton

**MELISSA**

Débardeur  
Sleeveless

**LUNA**

Bretelles  
Tank Top

**MAYA**

Raglan



**Coloris / Colours:**

-  blanc / white
-  noir / black
-  bleu ciel / sky blue

**Tailles / Sizes**

- S
- M

**Coloris / Colours:**

-  blanc / white
-  dark ash
-  noir / black
-  kaki
-  beige / sand
-  rouge / red
-  bleu ciel / sky blue
-  rose / pink
-  bleu marine / navy

**Tailles / Sizes**

- S
- M

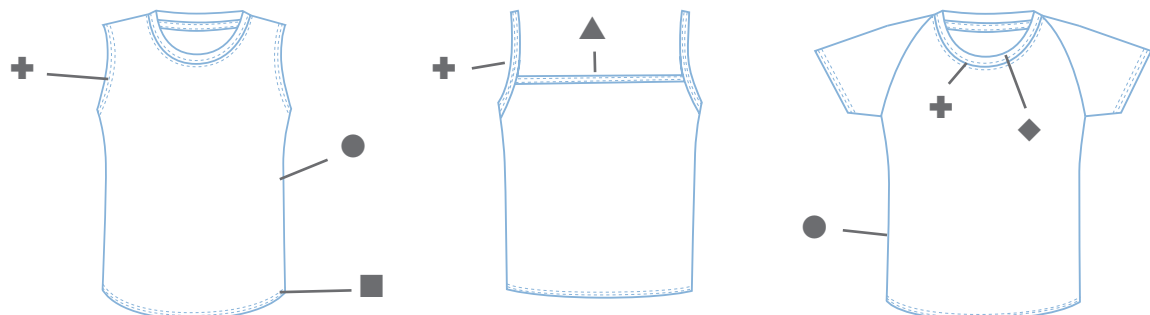
**Coloris / Colours:**

-  blanc / rouge / white / red
-  blanc / bleu marine / white / navy
-  blanc / bleu ciel / white / sky blue

**Tailles / Sizes**

- S
- M

**Dessin technique / Technical design:**



- +** Côte 1x1 / Rib 1x1
- ▲** Encolure droite / Straight neck line
- Bas arrondi / Rounded hem
- ◆** Col fin double épaisseur / Double layer narrow collar
- Coupe moulante cintrée / Tapered body



**MELISSA - LUNA :** +/- 220 g/m<sup>2</sup> Fil Ring Spun, Pré-rétréci / Ring spun yarn, Pre-shrunk  
**MAYA :** +/- 240 g/m<sup>2</sup> Fil Ring Spun, Pré-rétréci / Ring spun yarn, Pre-shrunk

Colisage : par taille / par couleur - 10 Pcs / Polybag  
 Packaging: by size / by colour - 100 Pcs / Ctn



100% Coton / Cotton



## CLARA



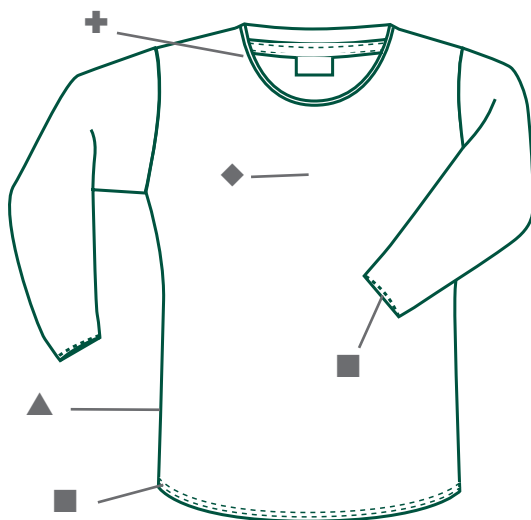
### Coloris / Colours:


-  blanc / white
-  dark ash
-  bleu ciel / sky blue
-  marine / navy
-  rose / pink
-  rouge / red
-  beige / sand
-  kaki
-  noir / black

### Tailles / Sizes

- S
- M

### Dessin technique / Technical design:



- Double couture manches & bord inférieur / Double stitching on sleeves & hem
- ⊕ Colletage fin double épaisseur / Double collar tape with narrow stitching
- ▲ Coupe près du corps / Tapered body
- ◆ Côte 1x1 / Rib 1x1
-  +/- 230 g/m<sup>2</sup> Fil Ring Spun, Pré-rétréci / Ring spun yarn, Pre-shrunk

Colisage : par taille / par couleur  
Packaging: by size / by colour

- 10 Pcs / Polybag  
- 100 Pcs / Ctn

// Ladies T-Shirt / 8 //

**GREENFEE POLO 100% Coton / Cotton**

**SWING POLO 65% Coton / Cotton - 35 % Polyester**

## SWING POLO - GREENFEE POLO



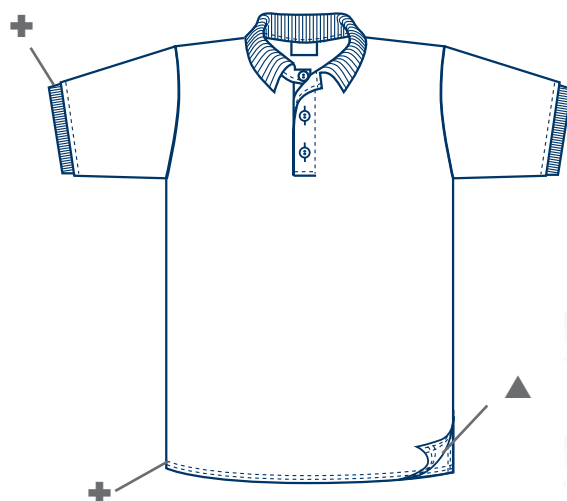
### Coloris / Colours:

-  blanc / white
-  ash
-  bleu marine / navy
-  rouge / red
-  bleu royal / king
-  beige / sand
-  anthracite
-  vert / green
-  noir / black

### Tailles / Sizes

4/6	8/10	12/14
S	M	L
XL	XXL	3XL

### Dessin technique / Technical design:





+ Double piqûre manches & bord inférieur / Double stitching on sleeves & hem

▲ Fente latérale / Side slit

#### GREENFEE POLO

 +/- 180 g/m<sup>2</sup> Fil Ring Spun, Pré-rétréci / Ring spun yarn, Pre-shrunk

#### SWING POLO

  +/- 180 g/m<sup>2</sup> Fil Ring Spun, Pré-rétréci / Ring spun yarn, Pre-shrunk

Colisage : par taille / par couleur  
Packaging: by size / by colour

- 5 Pcs / Polybag  
- 50 Pcs / Ctn

100% Coton / Cotton

## BIRDIE POLO

Manches Courtes - Manches Longues  
Short Sleeves - Long Sleeves



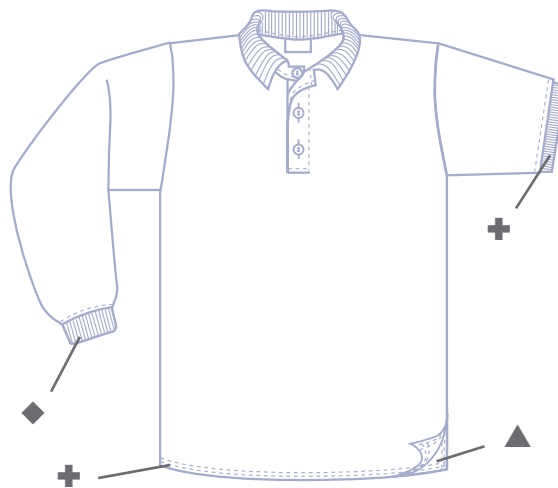
### Coloris / Colours:


-  blanc / white
-  ash
-  bleu marine / navy
-  beige / sand
-  rouge / red
-  vert / green
-  anthracite
-  bleu royal / king
-  noir / black

### Tailles / Sizes

- |    |     |     |
|----|-----|-----|
| S  | M   | L   |
| XL | XXL | 3XL |

### Dessin technique / Technical design:



- + Double piqûre manches & bord inférieur / Double stitching on sleeves & hem
- ▲ Fente latérale / Side slit
- ◆ Manches terminées par un bord côte / Ribbed cuffs
-  +/- 220 g/m<sup>2</sup> Fil Ring Spun, Pré-rétréci / Ring spun yarn, Pre-shrunk

Colisage : par taille / par couleur  
Packaging: by size / by colour


- 5 Pcs / Polybag  
- 50 Pcs / Ctn

100% Coton / Cotton

POLO RUGBY



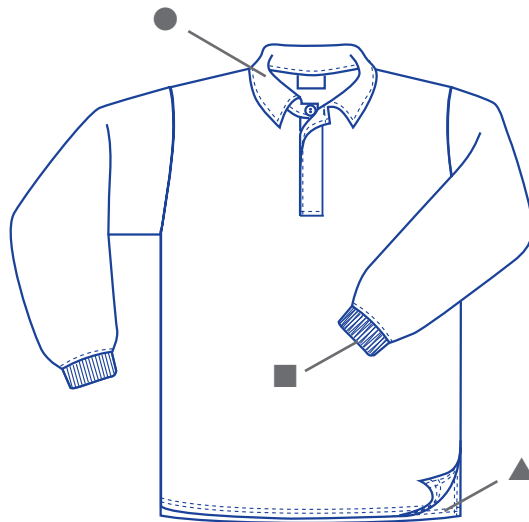
**Coloris / Colours:**

 bleu marine / navy

**Tailles / Sizes**

S	M	L
XL	XXL	3XL


**Dessin technique / Technical design:**



■ Manches terminées par un bord côte / Ribbed cuff

▲ Fentes latérales renforcées-twill / Reinforced side slit with twill tape

● Col écru / Woven off-white collar

 +/- 240 g/m<sup>2</sup> Fil Ring Spun, Pré-rétréci / Ring spun yarn, Pre-shrunk

Colisage : par taille / par couleur  
Packaging: by size / by colour

- 5 Pcs / Polybag  
- 25 Pcs / Ctn

80% Coton / Cotton - 20% Polyester

## SPORT



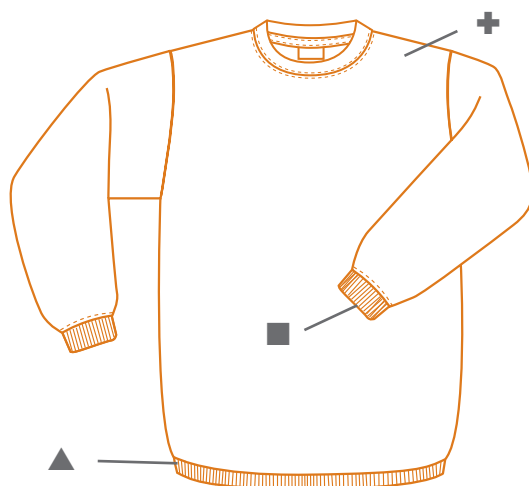
### Coloris / Colours:


-  blanc / white
-  bleu marine / navy
-  ash
-  bleu royal / king
-  rouge / red
-  noir / black

### Tailles / Sizes

S	M	L
XL	XXL	3XL

### Dessin technique / Technical design:



- + Pré - rétréci / Pre - shrunk
- ▲ Bord inférieur côte 1x1 / Ribbed waist band
- Manches terminées par un bord côte / Ribbed cuffs
-  +/- 270 g/m<sup>2</sup> Grand Teint, intérieur gratté / Double dyed, brushed inside

Colisage : par taille / par couleur  
Packaging: by size / by colour

- 5 Pcs / Polybag  
- 25 Pcs / Ctn

35% Coton / Cotton - 65% Polyester

CLASSIC

Manches Courtes - Manches Longues  
Short Sleeves - Long Sleeves



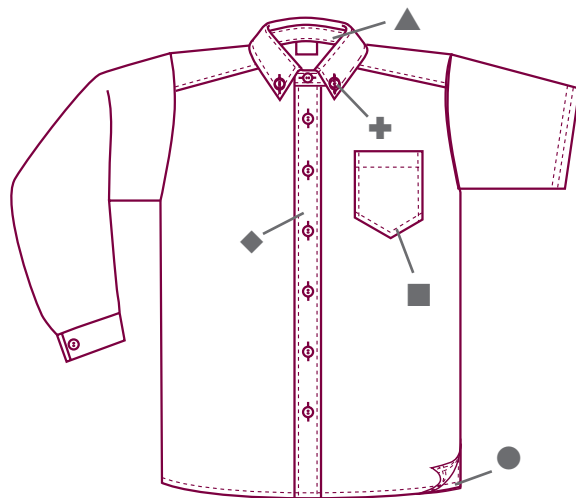
## Coloris / Colours:



-  blanc / white
-  bleu marine / navy
-  rouge / red
-  beige / sand
-  noir / black

## Tailles / Sizes

- |    |     |     |
|----|-----|-----|
| S  | M   | L   |
| XL | XXL | 3XL |

## Dessin technique / Technical design:



- + Col avec boutons / Button down collar
- ▲ Col doublé / Double layer collar
- Poche plaquée (13x15cm) / Chest pocket (13x15cm)
- Pans droits avec fentes latérales / Straight cut with side slit
- ◆ Patte de boutonnage doublée / Double layer button flap
-  +/- 110 g/m<sup>2</sup> Tissus Teint / Fabric dyed
- 

Colisage : par taille / par couleur  
Packaging: by size / by colour SS-LS

- 5 Pcs / Polybag  
- 25 Pcs / Ctn



70% Coton / Cotton - 30% Polyester

## OXFORD

Manches Courtes - Manches Longues  
Short Sleeves - Long Sleeves



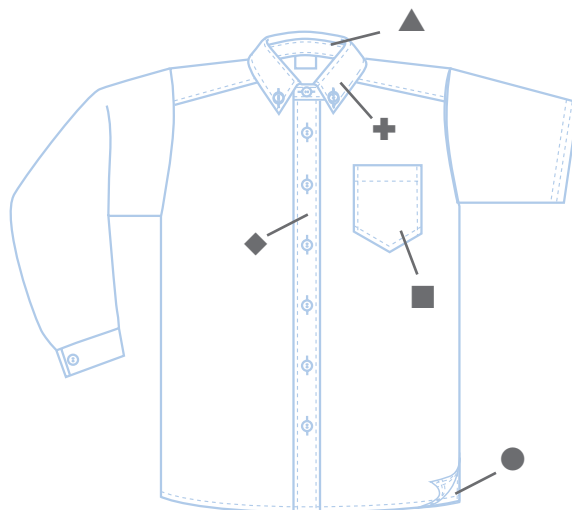
### Coloris / Colours:



-  blanc / white
-  bleu ciel / sky blue

### Tailles / Sizes

S	M	L
XL	XXL	3XL

### Dessin technique / Technical design:



- + Col avec boutons / Button down collar
- ▲ Col doublé / Double layer collar
- Poche plaquée (13x15cm) / Chest pocket (13x15cm)
- Pans droit avec fentes latérales / Straight cut with side slit
- ◆ Patte de boutonnage doublée / Double layer button flap
-  +/- 130 g/m<sup>2</sup> Fill Teint /
-  Yarn dyed

Colisage : par taille / par couleur  
Packaging: by size / by colour




- 5 Pcs / Polybag  
- 25 Pcs / Ctn



80% Coton / Cotton - 20% Polyester

CITY

**Coloris / Colours:**

-  blanc / white
-  bleu marine / navy
-  ash


**Tailles / Sizes**

- |    |     |     |
|----|-----|-----|
| S  | M   | L   |
| XL | XXL | 3XL |



**Dessin technique / Technical design:**



- + Pré - rétréci / Pre - shrunk
- ▲ Coupe droite / Straight cut
- Fentes latérales / Side slit
- Col V côte 1x1 avec double rayure contrastée / Collar V with contrast tipped ribbing
-  +/- 270 g/m<sup>2</sup> Grand Teint, intérieur gratté / Double dyed, brushed inside




Colisage : par taille / par couleur  
Packaging: by size / by colour

- 5 Pcs / Polybag  
- 50 Pcs / Ctn

100% Polyester

POLAR HURRICANE - POLAR TYPHOON

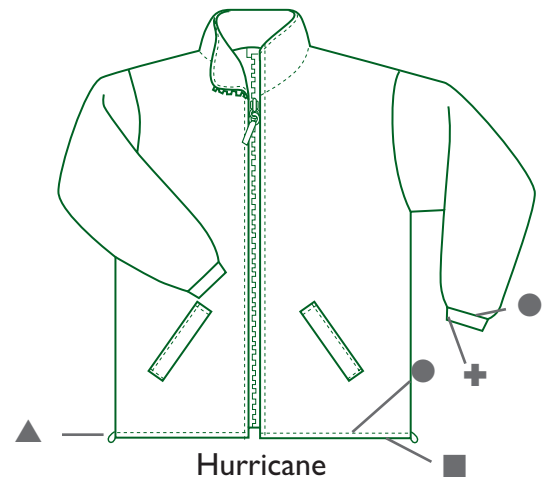
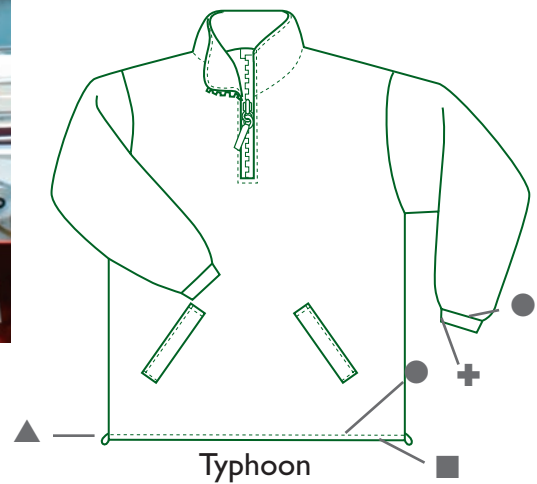
Coloris / Colours:

-  bleu marine / navy
-  ash
-  olive

Tailles / Sizes

- |    |     |     |
|----|-----|-----|
| S  | M   | L   |
| XL | XXL | 3XL |

Dessin technique  
Technical design



- + Élastiques aux poignets / Elastic cuffs
- ▲ Cordons ajustables / Adjustable cord with fastener
- Coupe droite / Straight cut
- Doubles piqûres manches, bord inférieur / Double stitching on sleeves & hem
- ⊗ +/- 270 g/m<sup>2</sup> Polaire, anti-bouloche / Polar Fleece, anti-pill finish

Colisage : par taille / par couleur  
Packaging: by size / by colour




- 5 Pcs / Polybag  
- 25 Pcs / Ctn

100% Polyester

## POLAR TWISTER



### Coloris / Colours:

-  bleu marine / navy
-  ash
-  olive

### Tailles / Sizes

S	M	L
XL	XXL	3XL

### Dessin technique / Technical design:



- ▲ Cordons ajustables / Adjustable cord with fastener
- Coupe droite / Straight cut
- Double piqûre manches & bord inférieur / Double stitching on sleeves & hem
- ⊗ +/- 270 g/m<sup>2</sup> Polaire, anti-bouloche / Polar Fleece, anti-pill finish

Colisage : par taille / par couleur  
Packaging: by size / by colour


- 5 Pcs / Polybag  
- 25 Pcs / Ctn

65% Coton / Cotton - 35% Polyester

## BASIC



### Coloris / Colours:

 bleu marine / navy

### Tailles / Sizes





### Dessin technique / Technical design:



+ 2 poches latérales à rabat velcro / 2 side pockets with flap & velcro fastner

▲ Fermeture à glissière protégée par un large rabat velcro / Full zip with protective flap & velcro closure

■ Coupe droite / Straight cut

 Polycoton extérieur /  
 Polycotton shell

Colisage : par taille / par couleur  
 Packaging: by size / by colour



- 5 Pcs / Polybag  
 - 25 Pcs / Ctn

65% Coton / Cotton - 35% Polyester

## TOP



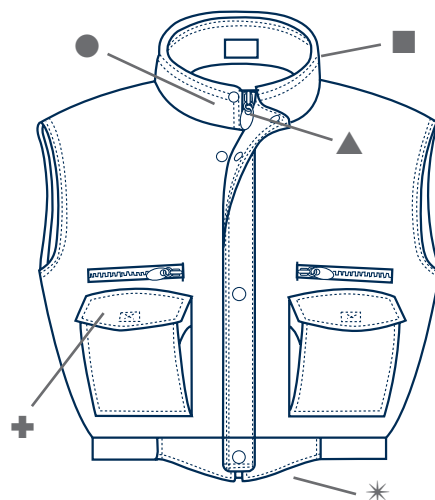
### Coloris / Colours:



-  bleu marine / navy
-  noir / black

### Tailles / Sizes

S	M	L
XL	XXL	3XL

### Dessin technique / Technical design:



- ⊕ 10 poches au total / 10 pockets in total
- ▲ Fermeture à glissière protégée par un large rabat à pressions / Full zip with protective flap & press buttons
- Capuche zippée dans le col / Zipped hood in collar
- Col montant boutonnable / High collar with press button
- Ouverture dos pour impressions / Zipped opening for printing on back
- \* Pan arrière recouvre le bas du dos / Long back cut
-  Polycoton extérieur /
-  Polycotton shell

Colisage : par taille / par couleur  
Packaging: by size / by colour

- 5 Pcs / Polybag  
- 25 Pcs / Ctn

100% Nylon

# SPINNAKER

COUPE VENT  
WINDBREAKER



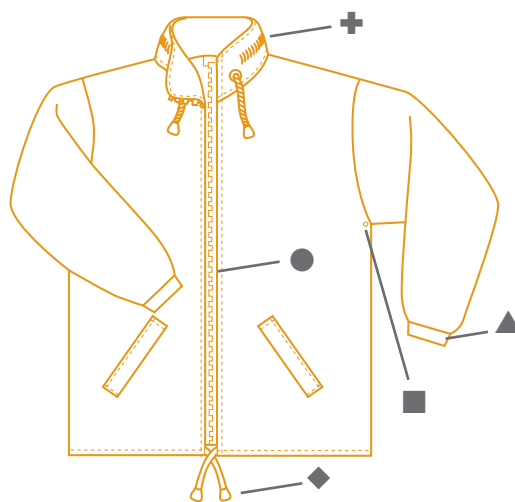
## Coloris / Colours:

-  blanc / white
-  bleu marine / navy
-  bordeaux
-  olive
-  noir / black

## Tailles / Sizes

4/6	8/10	12/14
S	M	L
XL	XXL	3XL

## Dessin technique / Technical design:



- + Capuche intégrée / Integrated hood in collar
- ▲ Poignets élastiques / Elastic at cuffs
- Œillets d'aération / Aeration eyelets
- Ouverture intégrale à glissière / Full length zip
- ◆ Cordelette de serrage / Tightening cord
- ⊗ Imperméable / waterproof

Colisage : par taille / par couleur  
Packaging: by size / by colour

- 5 Pcs / Polybag  
- 25 Pcs / Ctn

**Fabrication spéciale? Sérigraphie ? Broderie ?  
Contactez-nous pour une solution sur mesure !**

**Special production? Printing ? Embroidery ?  
Contact us for a tailor made solution!**



Upperdeck®

Distributeur:

*Distributor:*

JM Cotton Service  
ul. Trzebnicka 31-33  
50-321 Wrocław  
tel. 071/329-02-50, 071/329-00-53

[www.jmcotton.pl](http://www.jmcotton.pl)